

Keysight U8480 Series

USB Thermocouple Power Sensors

DC/10 MHz to 18/33/50/67/120 GHz

Data Sheet



Improve your power measurement throughput

Improve your power measurement throughput with the world's fastest USB thermocouple power sensors. The Keysight Technologies, Inc. U8480 Series USB thermocouple power sensors come with a measurement speed of 900 readings/second and power linearity of less than 0.8%, providing high accuracy and stability to help you make average power measurements quickly and confidently. With the U8480 Series USB sensors, one of the most cost-effective solutions in Keysight's power meter and sensor portfolio, you get top performance features at costs so affordable that every engineer can carry one in their bags.

Broad frequency coverage from DC to 120 GHz

Keysight's first power sensor with the capability to measure down to DC cover various test applications and can be used for broadband applications up to 120 GHz without the change of power sensors.

- U8481A DC/10 MHz to 18 GHz
- U8485A DC/10 MHz to 33 GHz
- U8487A 10 MHz to 50 GHz
- U8488A 10 MHz to 67 GHz
- U8489A DC to 120 GHz

Built-in trigger in function

Synchronize your measurement capture with the built-in trigger in function, without the need of an external module. The trigger-in function allows you to connect an external trigger signal from a signal source or the device-under-test directly to the USB sensor through a standard BNC to SMB cable.



The external trigger input port on the U8481A.

Internal calibration

Save time and reduce measurement uncertainty with the internal calibration function. These sensors come with technology that integrates a DC reference source and switching circuits into the body of the sensor so you can calibrate the sensor while it is connected to a device-under-test. This feature removes the need for connection and disconnection from an external calibration source, speeding up testing and reducing connector wear and tear. To perform zeroing, simply turn off the device-under-test.

Legacy excellence in a compact and portable form factor

The U8480 Series is based on the same front end design as the Keysight 8480 and N8480 Series power sensors, now equipped with USB capabilities and improved specifications such as a measurement speed ten times faster than the legacy series.

The U8480 Series plugs directly into your PC or USB-enabled Keysight instrument and gives you the capability to measure power without needing an external power meter or power supply. The sensors draw power directly from a USB port and do not need additional triggering modules to operate.

The U8480 Series is supported by the Keysight BenchVue software and BV0007B power meter/sensor control and analysis app. Once you plug the USB power sensor into a PC and run the software you can see measurement results in a wide array of display formats and log data without any programming.

For more information, www.keysight.com/find/BenchVue



The U8480 Series fits easily in your bag, making the sensors ideal solutions for field applications such as base station testing.

Fast measurement speed

The U8480 Series USB thermocouple power sensors offer a measurement speed of 900 readings/second (in fast mode), making them the world's fastest USB thermocouple power sensors. This feature is especially important in high volume manufacturing, where fast measurement speed is essential to maximize production throughput and increase productivity. By increasing the speed of measurements, test engineers can shorten the design cycle and accelerate the product time-to-market as they would require less time to carry out the same number of tests.

Real time measurement uncertainty

Measurement uncertainty is normally calculated manually by the user. The U8480 Series USB thermocouple power sensors now compute this value in real time and at any given point, removing the need for manual MU calculations, shortening test time and providing highly accurate measurements. Users can also display power measurements and their measurement uncertainty simultaneously.

Gamma correction

In an ideal measurement scenario, the reference impedance of the power sensor and device-under-test (DUT) impedance should equal the reference impedance (Z_0); however, this is rarely the case in practice. The mismatch in impedance values results in a portion of the signal voltage being reflected, and this reflection is quantified by the reflection coefficient, gamma.

Using the gamma correction function, users can simply input the DUT's gamma into the USB power sensor using SCPI commands or BenchVue BV0007B power meter/sensor control and analysis app. This will remove the mismatch error, yielding more accurate measurements.

S-parameter correction

Additional errors are often caused by components that are inserted between the DUT and the power sensor, such as in base station testing where a high power attenuator is connected between the sensor and base station to reduce the output power to the measurable power range of the sensor.

The S-parameters of these components can be obtained with a vector network analyzer in the touchstone format, and inputted into the sensor using SCPI commands or BenchVue BV0007B power meter/sensor control and analysis app. This error can now be corrected using the U8480 Series USB power sensor's S-parameter correction function. The sensor will behave as though it is connected directly to the DUT, giving users highly accurate power measurements.

Compatibility with other Keysight instruments

The U8480 Series, like all other Keysight USB power sensors, can be used as an accessory for other Keysight instruments, allowing these instruments to perform specific power measurement applications without needing to connect to a PC or laptop.

The U8480 Series power sensors are compatible with the Keysight FieldFox RF analyzers and MXG signal generator, giving them power meter functionalities, and with the MXG signal generator, user flatness correction (UFC) with external leveling as well. The U8480 Series also performs source power calibration with the Keysight PNA, PNA-L and PNA-X network analyzers. Please refer to the application note, Compatibility of USB Power Sensors with Keysight Instruments (5989-8743EN) for the latest compatibility information.

Firmware upgrade

The latest firmware for the U8480 Series includes executable file and help file for installing the Firmware Upgrade Utility application in order to upgrade the USB thermocouple power sensors. To download the latest firmware version for the U8480 Series, visit: www.keysight.com/find/pm_firmware

Performance specifications

Specification definitions

There are two types of product specifications:

- Warranted specifications are specifications which are covered by the product warranty and apply over a range of 0 to 55 °C unless otherwise noted. Warranted specifications include measurement uncertainty calculated with a 95% confidence
- Characteristic specifications are specifications that are not warranted. They describe product performance that is useful in the application of the product. These characteristic specifications are shown in *italics*.

Characteristic information is representative of the product. In many cases, it may also be supplemental to a warranted specification. Characteristics specifications are not verified on all units. There are several types of characteristic specifications. They can be divided into two groups.

One group of characteristic types

describes ‘attributes’ common to all products of a given model or option. Examples of characteristics that describe ‘attributes’ are the product weight and ‘50-Ω input Type-N connector’. In these examples, product weight is an ‘approximate’ value and a 50-Ω input is ‘nominal’. These two terms are most widely used when describing a product’s ‘attributes’.

The second group describes ‘statistically’ the aggregate performance of the population of products. These characteristics describe the expected behavior of the population of products. They do not guarantee the performance of any individual product. No measurement uncertainty value is accounted for in the specification. These specifications are referred to as ‘typical’.

Conditions

The power sensor will meet its specifications when:

- Stored for a minimum of two hours at a stable temperature within the operating temperature range, and turned on for at least 30 minutes
- The power sensor is within its recommended calibration period, and
- Used in accordance to the information provided in the User’s Guide.

U8480 Series USB Power Sensors Specifications

Key specifications		
Frequency range	U8481A Option 100	10 MHz to 18 GHz
	U8481A Option 200	DC to 18 GHz
	U8485A Option 100	10 MHz to 33 GHz
	U8485A Option 200	DC to 33 GHz
	U8487A Option 100	10 MHz to 50 GHz
	U8488A Option 100	10 MHz to 67 GHz <i>67 GHz to 70 GHz</i>
	U8489A Option 200	DC to 120 GHz
Power range	-35 dBm to 20 dBm	
Power linearity ¹	≤+15 dBm	± 0.50% (25 °C ± 10 °C)
		± 0.55% (0 to 55 °C)
	>+15 to +20 dBm	± 0.55% (25 °C ± 10 °C) ± 0.60% (0 to 55 °C)
Zero set (20% to 70% RH) ²	± 25 nW ³ ± 35nW ³ (U8489A)	
Internal calibration accuracy ⁴	± 0.52% (25 ± 10 °C)	
	± 0.59% (0 to 55 °C)	
Zeroing duration	16 s	
Internal calibration duration	1.5 s	
External calibration duration	9 s	
Damage level	AC coupled (option 100)	25 dBm (average power), 50 V (DC) 15 W (2 μs duration) (peak power)
	DC coupled (option 200)	25 dBm (average power), 4 V (DC) 15 W (2 μs duration) (peak power)

1. After zeroing and calibration at room temperature. Power Linearity is negligible below -1 dBm. Linearity specifications do not include zero set, zero noise or measurement noise that dominantly contribute to the measurement uncertainty at the power levels within 10 dB of the lowest measurable power. Typical performance is given in Figure 1.
2. RH is the abbreviation for relative humidity.
3. Tested at 50 MHz. After the sensor has been turned on for a minimum of 1 hour. Number of averages at 256.
4. The U8480 Series is equipped with an internal calibration capability, which means that it does not require a 1 mW power reference for calibration. This specification applies for the 50 MHz frequency.

Power linearity

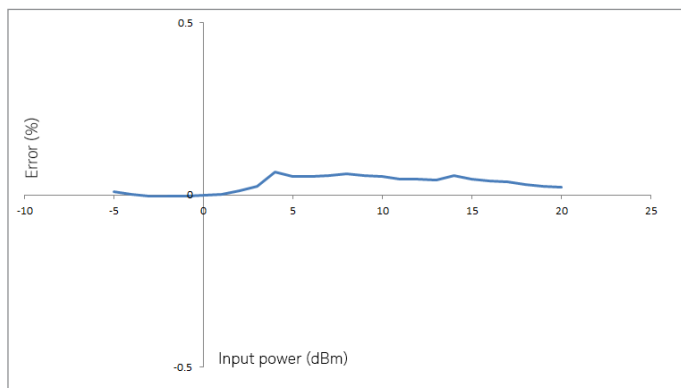


Figure 1. Typical U8480 Series power linearity at 25 °C with measurement uncertainty of ± 0.21%

Maximum SWR

Frequency band	U8481A		Frequency band	U8485A	
	25 °C ± 10 °C	0 °C to 55 °C		25 °C ± 10 °C	0 °C to 55 °C
DC to 10 MHz ¹	1.11	1.14	DC to 10 MHz ¹	1.07	1.07
10 MHz ² to 30 MHz	1.37	1.57	10 MHz ² to 50 MHz	1.33	1.53
>30 MHz to 50 MHz	1.14	1.16	>50 MHz to 100 MHz	1.08	1.11
>50 MHz to 2 GHz	1.08	1.11	>100 MHz to 2 GHz	1.05	1.07
>2 GHz to 12.4 GHz	1.16	1.16	>2 GHz to 12.4 GHz	1.14	1.14
>12.4 GHz to 18 GHz	1.23	1.25	>12.4 GHz to 18 GHz	1.19	1.20
–	–	–	>18 GHz to 26.5 GHz	1.26	1.28
–	–	–	>26.5 GHz to 33 GHz	1.37	1.45

1. Only applicable for Option 200

2. >10 MHz for Option 200, 10 MHz for Option 100

Frequency band	U8487A		Frequency band	U8488A	
	25 °C ± 10 °C	0 °C to 55 °C		25 °C ± 10 °C	0 °C to 55 °C
10 MHz to 50 MHz	1.35	1.64	10 MHz to 100 MHz	1.06	1.06
>50 MHz to 100 MHz	1.08	1.10	>100 MHz to 2.4 GHz	1.06	1.07
>100 MHz to 2 GHz	1.05	1.07	>2.4 GHz to 12.4 GHz	1.13	1.14
>2 GHz to 12.4 GHz	1.10	1.10	>12.4 GHz to 18 GHz	1.14	1.14
>12.4 GHz to 18 GHz	1.16	1.16	>18 GHz to 26.5 GHz	1.20	1.20
>18 GHz to 26.5 GHz	1.22	1.22	>26.5 GHz to 40 GHz	1.25	1.25
>26.5 GHz to 40 GHz	1.30	1.30	>40 GHz to 67 GHz	1.42	1.43
>40 GHz to 50 GHz	1.34	1.33	>67 GHz to 70 GHz	1.36	1.41

Frequency band	U8489A	
	25 °C ± 10 °C	0 °C to 55 °C
DC to 10 MHz	1.02	1.03
>10 MHz to 100 MHz	1.02	1.02
>100 MHz to 2 GHz	1.05	1.05
>2 GHz to 12.4 GHz	1.10	1.10
>12.4 GHz to 18 GHz	1.11	1.12
>18 GHz to 26.5 GHz	1.14	1.14
>26.5 GHz to 40 GHz	1.21	1.21
>40 GHz to 67 GHz	1.42	1.41
>67 GHz to 80 GHz	1.49	1.50
>80 GHz to 95 GHz	1.57	1.58
>95 GHz to 110 GHz	1.73	1.74
>110 GHz to 120 GHz	1.76	1.77
>120 GHz to 125 GHz	1.71	1.72

Zero drift and measurement noise

Conditions (RH) ¹	Zero drift ^{2,3}	Measurement noise ^{2,4}
up to 70%	± 5.5 nW	± 45 nW

1. RH is the abbreviation for relative humidity.
2. Zero drift and measurement noise specifications are tested at 50 MHz.
3. Within 1 hour of warm up and after zeroing, at a constant temperature, taken over a period of 4 hours of the total measurement time. This drift is calculated based on the average of hourly drifts.
4. The number of averages at 16 for the normal mode, 32 for the ×2 mode, and 512 for the fast mode, at a constant temperature, measured over a 1-minute interval and two standard deviations.

Noise multiplier

Number of averages	1	2	4	8	16	32	64	128	256	512	1024
Normal mode	3.17	2.62	2.02	1.54	1.00	0.82	0.60	0.50	0.37	0.27	0.15
×2 mode	4.55	3.76	3.00	2.25	1.59	1.00	0.85	0.63	0.47	0.42	0.23
Fast mode	46.88	33.06	24.00	17.19	12.24	8.39	4.93	4.11	2.48	1.00	0.83

Measurement rate

Measurement speed mode	Measurement speed
Normal	20 readings/s
Double	40 readings/s
Fast ¹	900 readings/s ²

1. To reduce sensor-dependent delay time, use the measurement buffer by setting the trigger count > 1.
2. The measurement is taken with the averaging state set to off.

Settling time

Number of averages	1	2	4	8	16	32	64	128	256	512	1024
Settling time(s) (Normal mode) ¹	0.10	0.15	0.25	0.45	0.85	1.63	3.20	6.36	12.6	25.2	50.4
Settling time(s) (×2 mode) ¹	0.08	0.10	0.15	0.25	0.45	0.89	1.63	3.20	6.35	12.6	25.2
Settling time(s) (Fast mode) ^{1,2}	0.003	0.005	0.007	0.011	0.020	0.036	0.069	0.134	0.265	0.528	1.053

1. Manual filter, 10 dB decreasing power step.
2. Noise measurement in fast mode fluctuates at lower power. Although the averaging count (filter) is initially set to 256, if any of the 256 measurement samples taken are higher than -30 dBm, the firmware automatically changes the averaging count to 128.

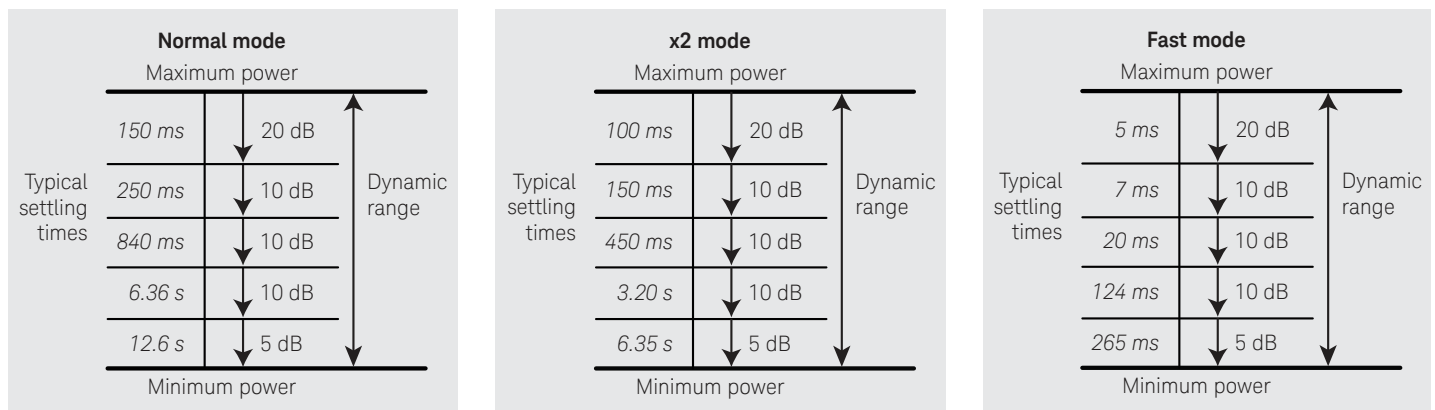


Figure 8. Auto-filter, default resolution, 10 dB decreasing power step

Calibration factor (CF) uncertainty

The typical measurement uncertainties listed are not to be taken as the maximum CF measurement uncertainties.

Note: The CF uncertainty is dependent on the calibration standard's uncertainty provided by Calibration Labs. For the exact uncertainty, refer to the individual sensor calibration report.

U8481A frequency band	25 °C ± 3 °C	25 °C ± 10 °C	0 °C to 55 °C
DC to 10 MHz ¹	2.63%	3.30%	3.44%
10 MHz ² to 30 MHz	1.05%	1.25%	2.35%
>30 MHz to 500 MHz	0.85%	0.89%	1.10%
>500 MHz to 1.2 GHz	0.78%	0.87%	0.87%
>1.2 GHz to 6 GHz	0.91%	1.10%	1.51%
>6 GHz to 14 GHz	1.26%	1.47%	2.04%
>14 GHz to 18 GHz	1.59%	1.96%	2.39%

1. Only applicable for Option 200
2. >10 MHz for Option 200, 10 MHz for Option 100

U8485A frequency band	25 °C ± 3 °C	25 °C ± 10 °C	0 °C to 55 °C
DC to 10 MHz ¹	2.37%	2.80%	2.88%
10 MHz ² to 30 MHz	1.50%	1.49%	2.04%
>30 MHz to 500 MHz	1.37%	1.46%	1.98%
>500 MHz to 1.2 GHz	1.26%	1.52%	2.07%
>1.2 GHz to 6 GHz	1.35%	1.68%	2.40%
>6 GHz to 14 GHz	1.66%	2.26%	2.99%
>14 GHz to 18 GHz	1.83%	2.47%	3.35%
>18 GHz to 26.5 GHz	2.67%	3.75%	4.70%
>26.5 GHz to 33 GHz	3.32%	4.79%	6.41%

1. Only applicable for Option 200
2. >10 MHz for Option 200, 10 MHz for Option 100

U8487A frequency band	25 °C ± 3 °C	25 °C ± 10 °C	0 °C to 55 °C
10 MHz to 30 MHz	1.79%	2.19%	4.15%
>30 MHz to 500 MHz	1.78%	1.90%	2.24%
>500 MHz to 1.2 GHz	1.79%	1.98%	2.34%
>1.2 GHz to 6 GHz	1.82%	2.06%	2.48%
>6 GHz to 14 GHz	1.88%	2.27%	2.53%
>14 GHz to 18 GHz	1.90%	2.36%	2.71%
>18 GHz to 26.5 GHz	2.09%	2.75%	3.23%
>26.5 GHz to 33 GHz	2.66%	3.35%	3.92%
>33 GHz to 34 GHz	2.66%	3.37%	4.10%
>34 GHz to 35 GHz	2.66%	3.39%	4.10%
>35 GHz to 40 GHz	2.66%	4.03%	4.69%
>40 GHz to 45 GHz	3.73%	4.58%	5.43%
>45 GHz to 50 GHz	4.68%	5.71%	6.68%

U8488A frequency band	25 °C ± 3 °C	25 °C ± 10 °C	0 °C to 55 °C
10 MHz to 50 MHz	2.04%	2.14%	2.16%
>50 MHz to 100 MHz	1.94%	2.05%	2.05%
>100 MHz to 2 GHz	1.98%	2.18%	2.36%
>2 GHz to 12.4 GHz	2.13%	2.80%	3.56%
>12.4 GHz to 18 GHz	2.24%	3.01%	3.88%
>18 GHz to 26.5 GHz	2.52%	3.09%	3.89%
>26.5 GHz to 50 GHz	4.66%	5.49%	6.65%
>50 GHz to 67 GHz	5.14%	6.06%	7.48%
>67 GHz to 70 GHz	5.70%	8.14%	9.16%

U8489A frequency band	25 °C ± 3 °C	25 °C ± 10 °C	0 °C to 55 °C
DC to 10 MHz	0.69%	1.16%	2.88%
>10 MHz to 100 MHz	1.32%	1.79%	3.51%
>100 MHz to 2 GHz	1.60%	2.63%	3.96%
>2 GHz to 12.4 GHz	2.06%	3.01%	5.08%
>12.4 GHz to 18 GHz	2.08%	3.39%	5.39%
>18 GHz to 26.5 GHz	2.43%	3.97%	5.35%
>26.5 GHz to 50 GHz	4.28%	5.86%	7.94%
>50 GHz to 67 GHz	5.81%	7.33%	9.69%
>67 GHz to 80 GHz	6.46%	7.24%	11.96%
>80 GHz to 95 GHz	6.41%	9.02%	14.32%
>95 GHz to 110 GHz	7.63%	8.97%	11.97%
>110 GHz to 120 GHz	7.85%	9.19%	11.62%

External trigger

External TTL trigger input	
High	> 1.9 V
Low	< 1.1 V
Latency ¹	11 μs ± 2 μs
Minimum trigger pulse width	35 ns
Minimum trigger repetition period	80 ns
Impedance	50 Ω or 1 MΩ
Trigger delay	
Range	0 s to 1 s
Resolution	10 μs

1. External trigger latency is defined as the delay between the applied trigger crossing the trigger level and the U8480 Series switching into the triggered state.

General specifications

Acquisition		
Analog-to-digital converter (ADC) sampling rate	192 kHz	
ADC resolution	24 bits	
Integration time ¹	1.024 ms	
Other		
Current requirement	400 mA (approximately)	
Connector type	U8481A	N-Type (m), 50 Ω
	U8485A	3.5 mm (m), 50 Ω
	U8487A	2.4 mm (m), 50 Ω
	U8488A	1.85 mm (m), 50 Ω
	U8489A	1.0 mm (m), 50 Ω
Cable	USB 2.0 Type A to 5-pin Mini-B	
Interface	USB 2.0 interface, USB-TMC compliant	
Programmability	SCPI, Keysight VEE, LabVIEW, Microsoft Visual Basic	
Calibration	1 year	

1. Integration time is the period during which the U8480 Series ADC samples the input signal for a measurement.

Typical plot

The following typical plot is intended to provide additional information, useful in applying the U8480 Series by giving typical but not warranted performance parameters.

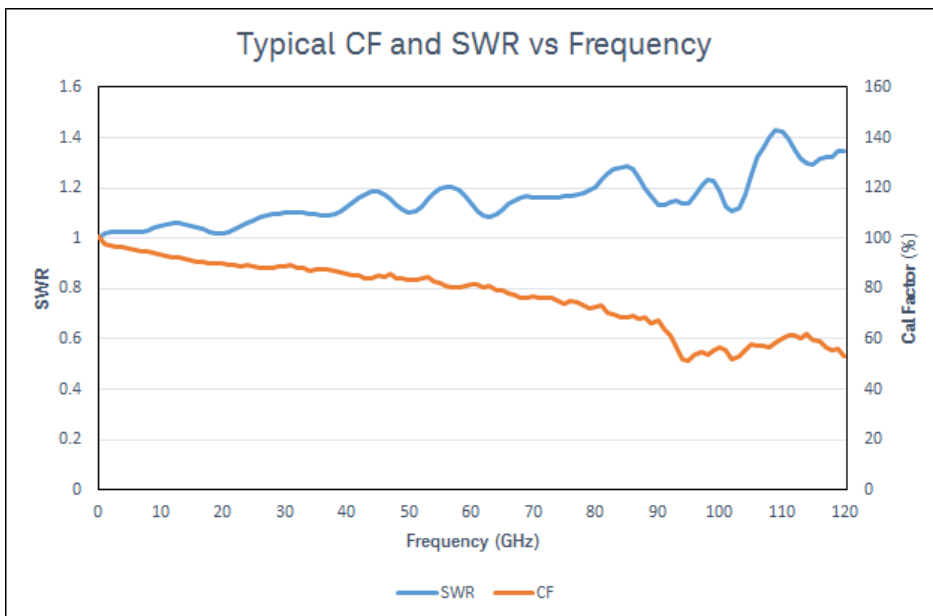


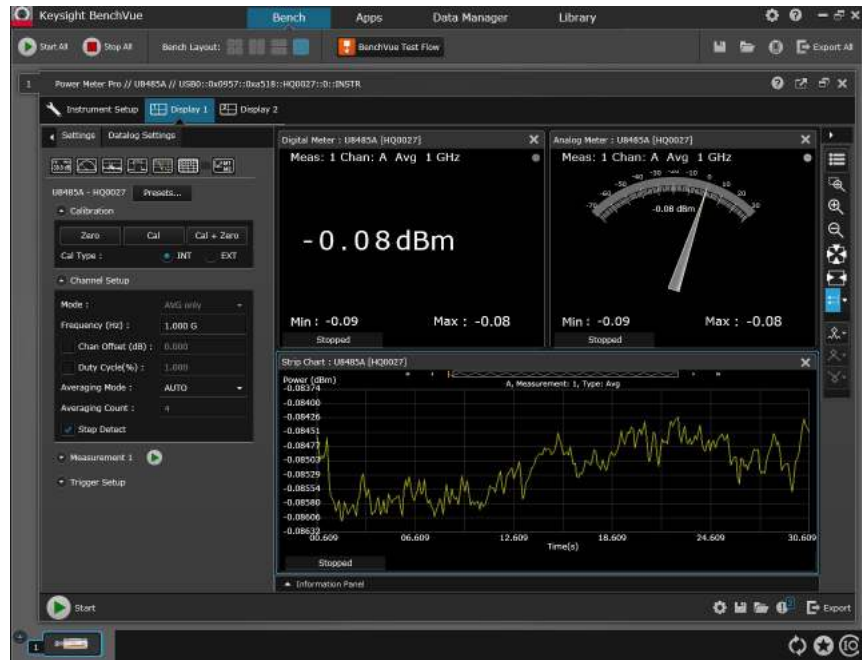
Figure 9. Typical calibration factor (CF) and SWR vs. frequency

General characteristics

Environmental compliance	
Temperature	Operating condition: 0 °C to 55 °C Storage condition: -40 °C to 71 °C
Humidity	Maximum Operating condition: 95% RH at 40 °C (non-condensing) Storage condition: Up to 90% RH at 65 °C (non-condensing)
Altitude	Operating and storage conditions: Up to 4.6 km (15000 ft)
Regulatory compliance	
The U8480 Series USB thermocouple power sensor complies with the following EMC requirements:	IEC61326-1:2012 / EN61326-1:2013 EN55011:2009/CISPR11:2009 Canada ICES/NMB-001: Issue 4, June 2006 Australia/New Zealand AS/NZS CISPR11:2011
(Length × Width × Height)	U8481A: 145 mm × 46 mm × 35.90 mm U8485A: 136.50 mm × 46 mm × 35.90 mm U8487A: 127.70 mm × 46 mm × 35.90 mm U8488A: 128.50 mm × 46 mm × 35.90 mm U8489A: 125.75 mm × 46 mm × 35.90 mm
Weight	
Net weight	U8481A: 0.256 kg U8485A: 0.25 kg U8487A: 0.22 kg U8488A: 0.22 kg U8489A: 0.20 kg
Shipping weight	U8481A: 1.35 kg U8485A: 1.402 kg U8487A: 1.37 kg U8488A: 1.37 kg U8489A: 0.97 kg
Connectivity	
USB 2.0, with the following cable lengths	Option 301: 1.5 m Option 302: 3 m Option 303: 5 m
Recommended calibration interval	1 year
Pollution	Degree 2

Using the U8480 Series with the BenchVue Software

Keysight BenchVue software for the PC accelerates testing by providing intuitive, multiple instrument measurement visibility and data capture with no programming necessary. You can derive answers faster than ever by easily viewing, capturing and exporting measurement data and screen shots.



Digital meter, analog meter and datalog view

Attributes

Supported functionality	
Measurement displays	Digital meter Analog meter Data log view Multilist with ratio / delta function Compact mode display
Graph functions	Single marker (up to 5 markers per graph) Dual marker (up to 2 sets of markers per graph) Graph autoscaling Graph zooming
Instrument settings	Save and recall instrument state including graph settings Instrument preset settings FDO tables Gamma and S-parameters tables Full instrumentation control include frequency/average/trigger settings, zero and calibration, etc.
Limit and alert function	Sensors Limit and alert notification Alert summary
Export data or screen shots	Data logging (HDF5/MATLAB/Microsoft Excel/Microsoft Word/CSV) Save screen capture (PNG/JPEG/BMP)

System and installation requirements

PC operating system	
Windows 10, 8 and 7	Windows 10 32-bit and 64-bit (Professional, Enterprise, Education, Home versions) Windows 8 32-bit and 64-bit (Core, Professional, Enterprise) Windows 7 SP1 and later 32-bit and 64-bit (Professional, Enterprise, Ultimate)
Computer hardware	Processor: 1 GHz or faster (2 GHz or greater recommended) RAM: 1 GB (32-bit) or 2 GB (64-bit) (3 GB or greater recommended)
Windows XP SP3 32-bit (Professional)	Processor: 600 MHz or faster (1 GHz or greater recommended) RAM: 1 GB (2 GB or greater recommended)
Interfaces	USB, GPIB, LAN, RS-232
Display resolution	1024 x 768 minimum for single instrument view (higher resolutions are recommended for multiple instrument view)

Additional requirements

Software: BenchVue requires a VISA (Keysight or National Instruments) when used to connect to physical instruments. Keysight IO Libraries, which contains the necessary VISA, will be installed automatically when BenchVue is installed. IO Libraries information is available at: www.keysight.com/find/iosuite

Ordering information

Model	Description
U8481A	USB thermocouple power sensor (Type-N)
U8481A-100	Standard option – 10 MHz to 18 GHz
U8481A-200	DC coupled option – DC to 18 GHz
U8485A	USB thermocouple power sensor (3.5 mm)
U8485A-100	Standard option – 10 MHz to 33 GHz
U8485A-200	DC coupled option – DC to 33 GHz
U8487A	USB thermocouple power sensor (2.4 mm)
U8487A-100	Standard option – 10 MHz to 50 GHz
U8488A	USB thermocouple power sensor (1.85 mm)
U8488A-100	Standard option – 10 MHz to 67 GHz
U8489A	USB thermocouple power sensor (1.0 mm)
U8489A-200	DC coupled option – DC to 120 GHz
U8489A-501	1.0 mm (f) to N-Type (m) adapter

Standard shipped items

- Power sensor cable 5 ft (1.5 m), default cable length
- Trigger cable, BNC male to SMB female, 50 Ω , 1.5 m
- Certificate of calibration
- Documentation CD-ROM
- Keysight Instrument Control DVD
 - IO libraries suite
 - Command expert
 - BenchVue software platform
 - 30-day free trial of BenchVue power meter/sensor control and analysis app
- U8485A: 3.5 mm (f) to N-Type (m) adapter¹
- U8487A/88A: 2.4 mm (f) to N-Type (m) adapter¹

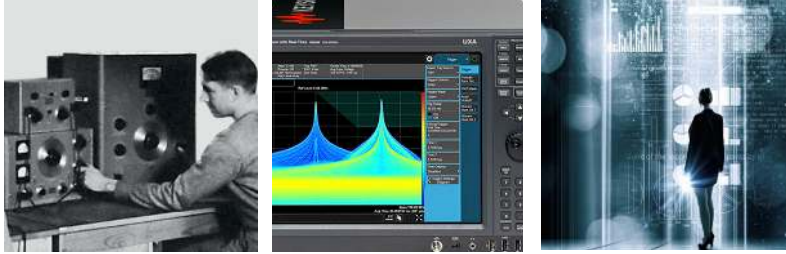
1. Not applicable to U8481A

Travel kits	
U2000A-201	Transit case
U2000A-202	Soft carrying case
U2000A-203	Holster
U2000A-204	Soft carrying pouch
Cables (selectable during sensor purchase)	
U2000A-301	Power sensor cable, 5 ft (1.5 m)
U2000A-302	Power sensor cable, 10 ft (3 m)
U2000A-303	Power sensor cable, 16.4 ft (5 m)
Cables	
U2031A	Power sensor cable, 5 ft (1.5 m)
U2031B	Power sensor cable, 10 ft (3 m)
U2031C	Power sensor cable, 16.4 ft (5 m)
U2032A	BNC male to SMB female trigger cable, 50 Ω , 1.5 m
Calibration	
U848xA-1A7	ISO 17025 compliant calibration and test data
U848xA-A6J	ANSI 540 compliant calibration and test data
U848xA-UK6	Commercial calibration certificate with test data
Software	
BV0007B	BenchVue power meter/sensor control and analysis app license
Documentation	
U8481A/85A/87A/88A/89A-ABJ	Japan - Japanese user guide; printed
U8481A/85A/87A/88A/89A-OB1	English language user guide; printed
U8481A/85A/87A/88A/89A-0BF	English language programming guide; printed
U8481A/85A/87A/88A/89A-0BN	English language service guide; printed

Evolving Since 1939

Our unique combination of hardware, software, services, and people can help you reach your next breakthrough. We are unlocking the future of technology.

From Hewlett-Packard to Agilent to Keysight.



For more information on Keysight Technologies' products, applications or services, please contact your local Keysight office. The complete list is available at: www.keysight.com/find/contactus

Americas

Canada	(877) 894 4414
Brazil	55 11 3351 7010
Mexico	001 800 254 2440
United States	(800) 829 4444

Asia Pacific

Australia	1 800 629 485
China	800 810 0189
Hong Kong	800 938 693
India	1 800 11 2626
Japan	0120 (421) 345
Korea	080 769 0800
Malaysia	1 800 888 848
Singapore	1 800 375 8100
Taiwan	0800 047 866
Other AP Countries	(65) 6375 8100

Europe & Middle East

Austria	0800 001122
Belgium	0800 58580
Finland	0800 523252
France	0805 980333
Germany	0800 6270999
Ireland	1800 832700
Israel	1 809 343051
Italy	800 599100
Luxembourg	+32 800 58580
Netherlands	0800 0233200
Russia	8800 5009286
Spain	800 000154
Sweden	0200 882255
Switzerland	0800 805353
	Opt. 1 (DE)
	Opt. 2 (FR)
	Opt. 3 (IT)
United Kingdom	0800 0260637

For other unlisted countries: www.keysight.com/find/contactus (BP-9-7-17)

DEKRA Certified
ISO 9001 Quality Management System

www.keysight.com/go/quality
Keysight Technologies, Inc.
DEKRA Certified ISO 9001:2015
Quality Management System

myKeysight

myKeysight

www.keysight.com/find/mykeysight

A personalized view into the information most relevant to you.

http://www.keysight.com/find/emt_product_registration

Register your products to get up-to-date product information and find warranty information.

KEYSIGHT SERVICES
Accelerate Technology Adoption.
Lower costs.

Keysight Services

www.keysight.com/find/service

Keysight Services can help from acquisition to renewal across your instrument's lifecycle. Our comprehensive service offerings—one-stop calibration, repair, asset management, technology refresh, consulting, training and more—helps you improve product quality and lower costs.

Keysight Assurance Plans

www.keysight.com/find/AssurancePlans

Up to ten years of protection and no budgetary surprises to ensure your instruments are operating to specification, so you can rely on accurate measurements.

Keysight Channel Partners

www.keysight.com/find/channelpartners

Get the best of both worlds: Keysight's measurement expertise and product breadth, combined with channel partner convenience.

www.keysight.com/find/usbthermosensor



This information is subject to change without notice.
© Keysight Technologies, 2012 - 2018
Published in USA, January 24, 2018
5991-1410EN
www.keysight.com